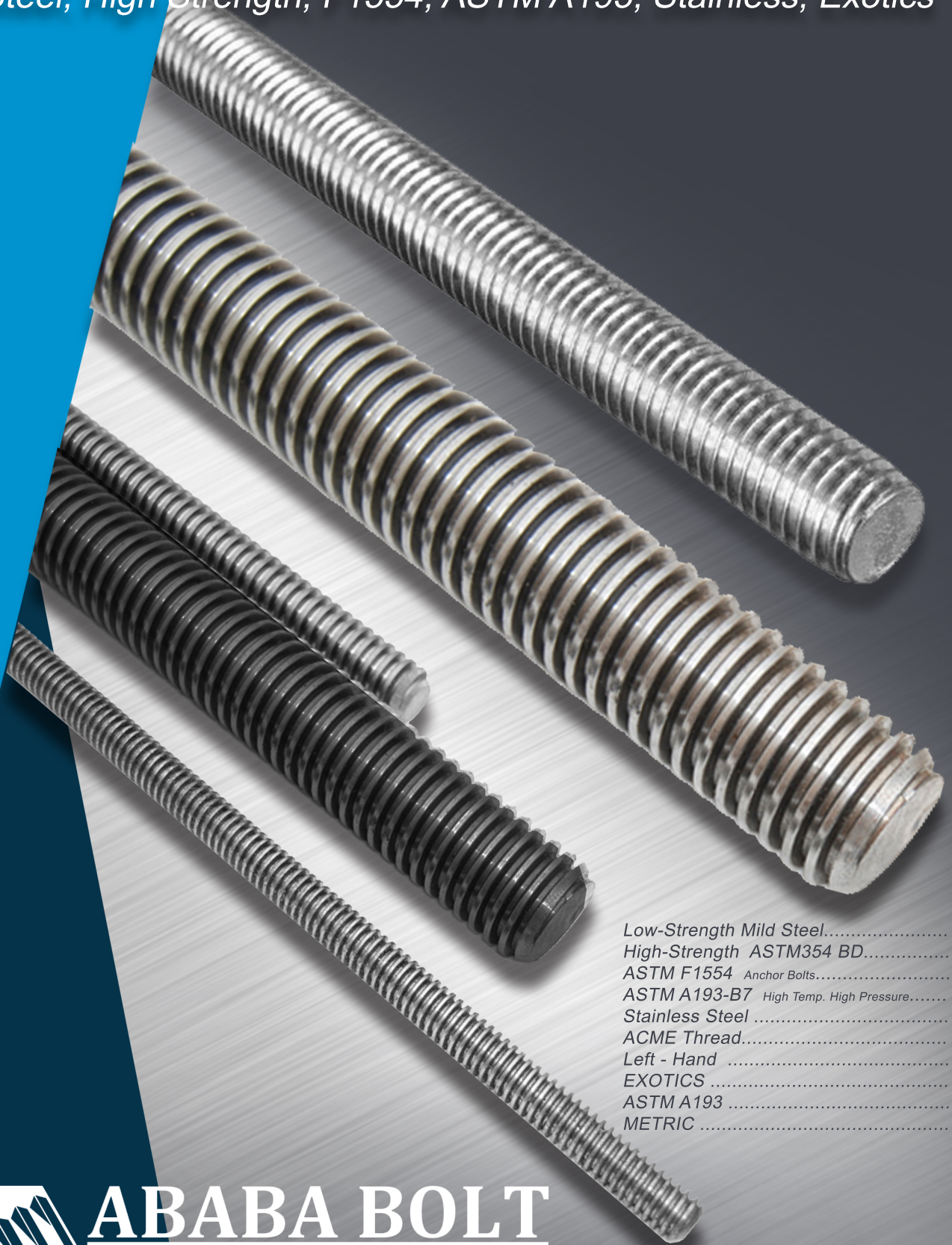


THREADED ROD

Steel, High Strength, F1554, ASTM A193, Stainless, Exotics



Low-Strength Mild Steel.....	page 1
High-Strength ASTM354 BD.....	page 2
ASTM F1554 Anchor Bolts.....	page 3
ASTM A193-B7 High Temp. High Pressure.....	page 4
Stainless Steel	page 5
ACME Thread.....	page 6
Left - Hand	page 6
EXOTICS	page 6
ASTM A193	page 6
METRIC	page 6



ABABA BOLT
Commercial Hardware
AN INDUSTRIAL THREADED PRODUCTS INC. COMPANY

THREADED ROD

MILD STEEL



LOW-STRENGTH / MILD STEEL
50,000 psi

2-56	LENGTH "	2-56 STEEL PLAIN	2-56 STEEL ZINC	2-56 STEEL H.D.G.	2-56 BRASS	2-56 NYLON	2-56 ALUMINUM
	36" (3 FT)	-	-	-	2C3600RODB	-	-

4-40	LENGTH "	4-40 STEEL PLAIN	4-40 STEEL ZINC	4-40 STEEL H.D.G.	4-40 BRASS	4-40 NYLON	4-40 ALUMINUM
	36" (3 FT)	4C3600RODXU	4C3600RODXZ	-	4C3600RODB	-	-
48" (4 FT)	-	-	-	-	4C4800RODN	-	-

5-40	LENGTH "	5-40 STEEL PLAIN	5-40 STEEL ZINC	5-40 STEEL H.D.G.	5-40 BRASS	5-40 NYLON	5-40 ALUMINUM
	36" (3 FT)	-	5C3600RODXZ	-	-	-	-

6-32	LENGTH "	6-32 STEEL PLAIN	6-32 STEEL ZINC	6-32 STEEL H.D.G.	6-32 BRASS	6-32 NYLON	6-32 ALUMINUM
	36" (3 FT)	-	6C3600RODXZ	-	6C3600RODB	-	-

8-32	LENGTH "	8-32 STEEL PLAIN	8-32 STEEL ZINC	8-32 STEEL H.D.G.	8-32 BRASS	8-32 NYLON	8-32 ALUMINUM
	36" (3 FT)	8C3600RODXU	8C3600RODXZ	-	8C3600RODB	-	8C3600RODA

10-24	LENGTH "	10-24 STEEL PLAIN	10-24 STEEL ZINC	10-24 STEEL H.D.G.	10-24 BRASS	10-24 NYLON	10-24 ALUMINUM
	24" (2 FT)	-	10C2400RODXZ	-	-	-	-
36" (3 FT)	-	10C3600RODXZ	-	10C3600RODB	-	10C3600RODA	-
48" (4 FT)	-	-	-	-	10C4800RODN	-	-
72" (6 FT)	-	10C7200RODXZ	-	-	-	10C7200RODA	-

10-32	LENGTH "	10-32 STEEL PLAIN	10-32 STEEL ZINC	10-32 STEEL H.D.G.	10-32 BRASS	10-32 NYLON	10-32 ALUMINUM
	36" (3 FT)	-	10F3600RODXZ	-	10F3600RODB	-	10F3600RODA
48" (4 FT)	-	-	-	-	10F4800RODN	-	-

12-24	LENGTH "	12-24 STEEL PLAIN	12-24 STEEL ZINC	12-24 STEEL H.D.G.	12-24 BRASS	12-24 NYLON	12-24 ALUMINUM
	36" (3 FT)	-	12C3600RODXZ	-	-	-	-

1/4-20	LENGTH "	1/4-20 STEEL PLAIN	1/4-20 STEEL ZINC	1/4-20 STEEL H.D.G.	1/4-20 BRASS	1/4-20 NYLON	1/4-20 ALUMINUM
	8"	-	25C800RODXZ	-	-	-	-
	8 1/2"	-	25C850RODXZ	-	-	-	-
	9 1/2"	-	25C950RODXZ	-	-	-	-
	10"	-	25C1000RODXZ	-	-	-	-
	11"	-	25C1100RODXZ	-	-	-	-
	12" (1 FT)	-	25C1200RODXZ	-	-	-	-
	13"	-	25C1300RODXZ	-	-	-	-
	24" (2 FT)	-	25C2400RODXZ	-	-	-	-
	36" (3 FT)	25C3600RODXU	25C3600RODXZ	-	25C3600RODB	-	25C3600RODA
	48" (4 FT)	25C4800RODXU	-	-	25C4800RODN	-	-
	60" (5 FT)	-	25C6000RODXZ	-	-	-	-
	72" (6 FT)	25C7200RODXU	25C7200RODXZ	-	-	-	25C7200RODA
	120" (10 FT)	25C12000RODXU	25C12000RODXZ	-	-	-	-
	144" (12 FT)	25C14400RODXU	25C14400RODXZ	-	-	-	-

1/4-28	LENGTH "	1/4-28 STEEL PLAIN	1/4-28 STEEL ZINC	1/4-28 STEEL H.D.G.	1/4-28 BRASS	1/4-28 NYLON	1/4-28 ALUMINUM
	36" (3 FT)	-	25F3600RODXZ	-	25F3600RODB	-	-
144" (12 FT)	25F14400RODXU	-	-	-	-	-	

5/16-18	LENGTH "	5/16-18 STEEL PLAIN	5/16-18 STEEL ZINC	5/16-18 STEEL H.D.G.	5/16-18 BRASS	5/16-18 NYLON	5/16-18 ALUMINUM
	12" (1 FT)	-	31C1200RODXZ	-	-	-	-
	36" (3 FT)	31C3600RODXU	31C3600RODXZ	-	31C3600RODB	-	31C3600RODA
	48" (4 FT)	-	-	-	-	31C4800RODN	-
	72" (6 FT)	-	31C7200RODXZ	-	-	-	31C7200RODA
	120" (10 FT)	31C12000RODXU	31C12000RODXZ	-	-	-	-
144" (12 FT)	31C14400RODXU	31C14400RODXZ	-	-	-	-	

5/16-24	LENGTH "	5/16-24 STEEL PLAIN	5/16-24 STEEL ZINC	5/16-24 STEEL H.D.G.	5/16-24 BRASS	5/16-24 NYLON	5/16-24 ALUMINUM
	36" (3 FT)	-	31F3600RODXZ	-	31F3600RODB	-	-

3/8-16	LENGTH "	3/8-16 STEEL PLAIN	3/8-16 STEEL ZINC	3/8-16 STEEL H.D.G.	3/8-16 BRASS	3/8-16 NYLON	3/8-16 ALUMINUM
	4"	-	37C400RODXZ	-	-	-	-
	8 1/2"	-	37C850RODXZ	-	-	-	-
	9"	-	37C900RODXZ	-	-	-	-
	9 1/2"	-	37C950RODXZ	-	-	-	-
	12" (1 FT)	-	37C1200RODXZ	-	-	-	-
	24" (2 FT)	-	37C2400RODXZ	-	-	-	-
	36" (3 FT)	37C3600RODXU	37C3600RODXZ	37C3600RODXG	37C3600RODB	-	37C3600RODA
	48" (4 FT)	-	-	-	-	37C4800RODN	-
	72" (6 FT)	-	37C7200RODXZ	-	-	-	37C7200RODA
120" (10 FT)	37C12000RODXU	37C12000RODXZ	37C12000RODXG	-	-	-	
144" (12 FT)	37C14400RODXU	37C14400RODXZ	-	-	-	-	

3/8-24	LENGTH "	3/8-24 STEEL PLAIN	3/8-24 STEEL ZINC	3/8-24 STEEL H.D.G.	3/8-24 BRASS	3/8-24 NYLON	3/8-24 ALUMINUM
	36" (3 FT)	37F3600RODXU	37F3600RODXZ	-	37F3600RODB	-	-
	72" (6 FT)	37F7200RODXU	37F7200RODXZ	-	-	-	-
120" (10 FT)	-	37F12000RODXZ	-	-	-	-	

7/16-14	LENGTH "	7/16-14 STEEL PLAIN	7/16-14 STEEL ZINC	7/16-14 STEEL H.D.G.	7/16-14 BRASS	7/16-14 NYLON	7/16-14 ALUMINUM
	36" (3 FT)	43C3600RODXU	43C3600RODXZ	-	43C3600RODB	-	43C3600RODA
	72" (6 FT)	43C7200RODXU	43C7200RODXZ	-	-	-	-
	120" (10 FT)	43C12000RODXU	43C12000RODXZ	-	-	-	-
	144" (12 FT)	43C14400RODXU	43C14400RODXZ	-	-	-	-

THREADED ROD

MILD STEEL



LOW-STRENGTH / MILD STEEL
50,000 psi

7/16-20	LENGTH "	7/16-20 STEEL PLAIN	7/16-20 STEEL ZINC	7/16-20 STEEL H.D.G.	7/16-20 BRASS	7/16-20 NYLON	7/16-20 ALUMINUM
	36" (3 FT)	43F3600RODXU	43F3600RODXZ	-	-	-	-
72" (6 FT)	43F7200RODXU	43F7200RODXZ	-	-	-	-	

1/2-13	LENGTH "	1/2-13 STEEL PLAIN	1/2-13 STEEL ZINC	1/2-13 STEEL H.D.G.	1/2-13 BRASS	1/2-13 NYLON	1/2-13 ALUMINUM
	6"	-	50C600RODXZ	-	-	-	-
	7"	-	50C700RODXZ	-	-	-	-
	12" (1 FT)	-	50C1200RODXZ	50C1200RODXG	-	-	-
	36" (3 FT)	50C3600RODXU	50C3600RODXZ	50C3600RODXG	50C3600RODB	-	50C3600RODA
	48" (4 FT)	-	-	-	-	50C4800RODN	-
72" (6 FT)	50C7200RODXU	50C7200RODXZ	50C7200RODXG	50C7200RODB	-	50C7200RODA	
120" (10 FT)	50C12000RODXU	50C12000RODXZ	50C12000RODXG	-	-	-	
144" (12 FT)	50C14400RODXU	50C14400RODXZ	50C14400RODXG	-	-	-	

1/2-20	LENGTH "	1/2-20 STEEL PLAIN	1/2-20 STEEL ZINC	1/2-20 STEEL H.D.G.	1/2-20 BRASS	1/2-20 NYLON	1/2-20 ALUMINUM
	36" (3 FT)	50F3600RODXU	50F3600RODXZ	-	-	-	-

9/16-12	LENGTH "	9/16-12 STEEL PLAIN	9/16-12 STEEL ZINC	9/16-12 STEEL H.D.G.	9/16-12 BRASS	9/16-12 NYLON	9/16-12 ALUMINUM
	36" (3 FT)	56C3600RODXU	56C3600RODXZ	-	-	-	-
	72" (6 FT)	-	56C7200RODXZ	-	-	-	-
	120" (10 FT)	-	56C12000RODXZ	-	-	-	-
144" (12 FT)	56C14400RODXU	-	-	-	-	-	

9/16-18	LENGTH "	9/16-18 STEEL PLAIN	9/16-18 STEEL ZINC	9/16-18 STEEL H.D.G.	9/16-18 BRASS	9/16-18 NYLON	9/16-18 ALUMINUM
	36" (3 FT)	56F3600RODXU	56F3600RODXZ	-	-	-	-
72" (6 FT)	56F7200RODXU	-	-	-	-	-	

5/8-11	LENGTH "	5/8-11 STEEL PLAIN	5/8-11 STEEL ZINC	5/8-11 STEEL H.D.G.	5/8-11 BRASS	5/8-11 NYLON	5/8-11 ALUMINUM
	24" (2 FT)	-	62C2400RODXZ	-	-	-	-
	36" (3 FT)	62C3600RODXU	62C3600RODXZ	62C3600RODXG	62C3600RODB	-	62C3600RODA
	48" (4 FT)	62C4800RODXU	-	-	-	62C4800RODN	-
	72" (6 FT)	62C7200RODXU	62C7200RODXZ	-	-	-	62C7200RODA
	120" (10 FT)	62C12000RODXU	62C12000RODXZ	62C12000RODXG	-	-	-
144" (12 FT)	62C14400RODXU	62C14400RODXZ	-	-	-	-	

5/8-18	LENGTH "	5/8-18 STEEL PLAIN	5/8-18 STEEL ZINC	5/8-18 STEEL H.D.G.	5/8-18 BRASS	5/8-18 NYLON	5/8-18 ALUMINUM
	36" (3 FT)	62F3600RODXU	62F3600RODXZ	-	-	-	-
144" (12 FT)	62F14400RODXU	62F14400RODXZ	-	-	-	-	

3/4-10	LENGTH "	3/4-10 STEEL PLAIN	3/4-10 STEEL ZINC	3/4-10 STEEL H.D.G.	3/4-10 BRASS	3/4-10 NYLON	3/4-10 ALUMINUM
	36" (3 FT)	75C3600RODXU	75C3600RODXZ	75C3600RODXG	-	-	75C3600RODA
	48" (4 FT)	-	-	-	-	75C4800RODN	-
	72" (6 FT)	75C7200RODXU	75C7200RODXZ	75C7200RODXG	75C7200RODB	-	-
	120" (10 FT)	75C12000RODXU	75C12000RODXZ	75C12000RODXG	-	-	-
	144" (12 FT)	75C14400RODXU	75C14400RODXZ	75C14400RODXG	-	-	-

3/4-16	LENGTH "	3/4-16 STEEL PLAIN	3/4-16 STEEL ZINC	3/4-16 STEEL H.D.G.	3/4-16 BRASS	3/4-16 NYLON	3/4-16 ALUMINUM
	36" (3 FT)	-	75F3600RODXZ	-	-	-	-

7/8-9	LENGTH "	7/8-9 STEEL PLAIN	7/8-9 STEEL ZINC	7/8-9 STEEL H.D.G.	7/8-9 BRASS	7/8-9 NYLON	7/8-9 ALUMINUM
	36" (3 FT)	-	87C3600RODXZ	87C3600RODXG	87C3600RODB	-	87C3600RODA
	120" (10 FT)	87C12000RODXU	87C12000RODXZ	87C12000RODXG	-	-	-
	144" (12 FT)	-	87C14400RODXZ	-	-	-	-



THREADED ROD

MILD STEEL



LOW-STRENGTH / MILD STEEL
50,000 psi

7/8-14	7/8-14 STEEL PLAIN	7/8-14 STEEL ZINC	7/8-14 STEEL H.D.G.	7/8-14 BRASS	7/8-14 NYLON	7/8-14 ALUMINUM
LENGTH "						
36" (3 FT)	-	87F3600RODXZ	-	87F3600RODB	-	-

1"-8	1"-8 STEEL PLAIN	1"-8 STEEL ZINC	1"-8 STEEL H.D.G.	1"-8 BRASS	1"-8 NYLON	1"-8 ALUMINUM
LENGTH "						
24" (2 FT)	-	100C2400RODXZ	-	-	-	-
36" (3 FT)	100C3600RODXU	100C3600RODXZ	100C3600RODXG	-	-	100C3600RODA
72" (6 FT)	100C7200RODXU	100C7200RODXZ	100C7200RODXG	-	-	-
120" (10 FT)	100C12000RODXU	100C12000RODXZ	100C12000RODXG	-	-	-
144" (12 FT)	100C14400RODXU	100C14400RODXZ	100C14400RODXG	-	-	-

1"-14	1"-14 STEEL PLAIN	1"-14 STEEL ZINC	1"-14 STEEL H.D.G.	1"-14 BRASS	1"-14 NYLON	1"-14 ALUMINUM
LENGTH "						
36" (3 FT)	100F3600RODXU	100F3600RODXZ	-	-	-	-
144" (12 FT)	100F14400RODXU	-	-	-	-	-

1-1/8-7	1-1/8-7 STEEL PLAIN	1-1/8-7 STEEL ZINC	1-1/8-7 STEEL H.D.G.	1-1/8-7 BRASS	1-1/8-7 NYLON	1-1/8-7 ALUMINUM
LENGTH "						
36" (3 FT)	112C3600RODXU	112C3600RODXZ	-	-	-	-
72" (6 FT)	112C7200RODXU	112C7200RODXZ	-	-	-	-
120" (10 FT)	112C12000RODXU	112C12000RODXZ	112C12000RODXG	-	-	-
144" (12 FT)	112C14400RODXU	112C14400RODXZ	112C14400RODXG	-	-	-

1-1/8-12	1-1/8-12 STEEL PLAIN	1-1/8-12 STEEL ZINC	1-1/8-12 STEEL H.D.G.	1-1/8-12 BRASS	1-1/8-12 NYLON	1-1/8-12 ALUMINUM
LENGTH "						
36" (3 FT)	-	112F3600RODXZ	-	-	-	-
120" (10 FT)	112F12000RODXU	-	-	-	-	-

1-1/4-7	1-1/4-7 STEEL PLAIN	1-1/4-7 STEEL ZINC	1-1/4-7 STEEL H.D.G.	1-1/4-7 BRASS	1-1/4-7 NYLON	1-1/4-7 ALUMINUM
LENGTH "						
36" (3 FT)	125C3600RODXU	125C3600RODXZ	-	-	-	-
72" (6 FT)	-	125C7200RODXZ	-	-	-	-
120" (10 FT)	125C12000RODXU	125C12000RODXZ	125C12000RODXG	-	-	-
144" (12 FT)	125C14400RODXU	125C14400RODXZ	125C14400RODXG	-	-	-

1-1/4-12	1-1/4-12 STEEL PLAIN	1-1/4-12 STEEL ZINC	1-1/4-12 STEEL H.D.G.	1-1/4-12 BRASS	1-1/4-12 NYLON	1-1/4-12 ALUMINUM
LENGTH "						
36" (3 FT)	125F3600RODXU	125F3600RODXZ	-	-	-	-
120" (10 FT)	125F12000RODXU	-	-	-	-	-
144" (12 FT)	125F14400RODXU	-	-	-	-	-

1-3/8-6	1-3/8-6 STEEL PLAIN	1-3/8-6 STEEL ZINC	1-3/8-6 STEEL H.D.G.	1-3/8-6 BRASS	1-3/8-6 NYLON	1-3/8-6 ALUMINUM
LENGTH "						
36" (3 FT)	137C3600RODXU	137C3600RODXZ	-	-	-	-
72" (6 FT)	-	137C7200RODXZ	-	-	-	-

1-1/2-6	1-1/2-6 STEEL PLAIN	1-1/2-6 STEEL ZINC	1-1/2-6 STEEL H.D.G.	1-1/2-6 BRASS	1-1/2-6 NYLON	1-1/2-6 ALUMINUM
LENGTH "						
36" (3 FT)	150C3600RODXU	150C3600RODXZ	-	-	-	-
72" (6 FT)	150C7200RODXU	150C7200RODXZ	-	-	-	-
120" (10 FT)	-	150C12000RODXZ	-	-	-	-
144" (12 FT)	150C14400RODXU	150C14400RODXZ	150C14400RODXG	-	-	-

1-1/2-12	1-1/2-12 STEEL PLAIN	1-1/2-12 STEEL ZINC	1-1/2-12 STEEL H.D.G.	1-1/2-12 BRASS	1-1/2-12 NYLON	1-1/2-12 ALUMINUM
LENGTH "						
36" (3 FT)	-	150F3600RODXZ	-	-	-	-

1-3/4-5	1-3/4-5 STEEL PLAIN	1-3/4-5 STEEL ZINC	1-3/4-5 STEEL H.D.G.	1-3/4-5 BRASS	1-3/4-5 NYLON	1-3/4-5 ALUMINUM
LENGTH "						
36" (3 FT)	-	175C3600RODXZ	-	-	-	-
72" (6 FT)	175C7200RODXU	-	-	-	-	-
144" (12 FT)	175C14400RODXU	-	-	-	-	-

2"-4.5	2"-4.5 STEEL PLAIN	2"-4.5 STEEL ZINC	2"-4.5 STEEL H.D.G.	2"-4.5 BRASS	2"-4.5 NYLON	2"-4.5 ALUMINUM
LENGTH "						
144" (12 FT)	200C14400RODXU	-	-	-	-	-



THREADED ROD

HIGH-STRENGTH



HIGH-STRENGTH / ASTM A354BD
150,000 psi PLAIN

3/8-16	3/8-16 PLAIN ASTM A354-BD	1-1/8-7	1-1/8-7 PLAIN ASTM A354-BD
LENGTH "		LENGTH "	
36" (3 FT)	37C3600RODXU/A354-BD	36" (3 FT)	112C3600RODXU/A354-BD

7/16-14	7/16-14 PLAIN ASTM A354-BD	1-1/4-7	1-1/4-7 PLAIN ASTM A354-BD
LENGTH "		LENGTH "	
36" (3 FT)	43C3600RODXU/A354-BD	36" (3 FT)	125C3600RODXU/A354-BD

1/2-13	1/2-13 PLAIN ASTM A354-BD
LENGTH "	
36" (3 FT)	50C3600RODXU/A354-BD
72" (6 FT)	50C7200RODXU/A354-BD
144" (12 FT)	50C14400RODXU/A354-BD

1/2-20	1/2-20 PLAIN ASTM A354-BD
LENGTH "	
36" (3 FT)	50F3600RODXU/A354-BD

5/8-11	5/8-11 PLAIN ASTM A354-BD
LENGTH "	
36" (3 FT)	62C3600RODXU/A354-BD
72" (6 FT)	62C7200RODXU/A354-BD

5/8-18	5/8-18 PLAIN ASTM A354-BD
LENGTH "	
72" (6 FT)	62F7200RODXU/A354-BD

3/4-10	3/4-10 PLAIN ASTM A354-BD
LENGTH "	
36" (3 FT)	75C3600RODXU/A354-BD

7/8-9	7/8-9 PLAIN ASTM A354-BD
LENGTH "	
36" (3 FT)	87C3600RODXU/A354-BD

1"-8	1"-8 PLAIN ASTM A354-BD
LENGTH "	
36" (3 FT)	100C3600RODXU/A354-BD



HIGH-STRENGTH / ASTM A354BD

THREADED ROD

F1554



ASTM F1554 ANCHOR BOLTS [Grade 36, Grade 55, Grade 105]

F1554 Grade 36	Low Carbon, 36 ksi yield steel anchor bolts.
F1554 Grade 55	High Strength, Low Alloy, 55 ksi yield steel anchor bolts.
F1554 Grade 105	Alloy, Heat Treated, High Strength, 105 ksi yield steel anchor bolts.

1/2-13	1/2-13 STEEL PLAIN F1554-GR36	1/2-13 STEEL ZINC F1554-GR36	1/2-13 STEEL H.D.G. F1554-GR36	1/2-13 STEEL PLAIN F1554-GR55	1/2-13 STEEL H.D.G. F1554-GR55	1/2-13 STEEL PLAIN F1554-GR105
LENGTH "						
36" (3 FT)	-	-	50C3600RODXG/F1554-36	-	-	-
72" (6 FT)	-	-	50C7200RODXG/F1554-36	-	-	50C7200RODXU/F1554-105
120" (10 FT)	-	50C12000RODXZ/F1554-36	50C12000RODXG/F1554-36	-	-	-
144" (12 FT)	-	50C14400RODXZ/F1554-36	50C14400RODXG/F1554-36	-	-	-

5/8-11	5/8-11 STEEL PLAIN F1554-GR36	5/8-11 STEEL ZINC F1554-GR36	5/8-11 STEEL H.D.G. F1554-GR36	5/8-11 STEEL PLAIN F1554-GR55	5/8-11 STEEL H.D.G. F1554-GR55	5/8-11 STEEL PLAIN F1554-GR105
LENGTH "						
36" (3 FT)	-	-	62C3600RODXG/F1554-36	-	-	-
72" (6 FT)	-	-	-	62C7200RODXU/F1554-55	-	-
120" (10 FT)	62C12000RODXU/F1554-36	62C12000RODXZ/F1554-36	62C12000RODXG/F1554-36	-	-	-
144" (12 FT)	-	62C14400RODXZ/F1554-36	62C14400RODXG/F1554-36	-	62C14400RODXG/F1554-55	-

3/4-10	3/4-10 STEEL PLAIN F1554-GR36	3/4-10 STEEL ZINC F1554-GR36	3/4-10 STEEL H.D.G. F1554-GR36	3/4-10 STEEL PLAIN F1554-GR55	3/4-10 STEEL H.D.G. F1554-GR55	3/4-10 STEEL PLAIN F1554-GR105
LENGTH "						
36" (3 FT)	75C3600RODXU/F1554-36	-	-	-	-	-
72" (6 FT)	75C7200RODXU/F1554-36	-	-	75C7200RODXU/F1554-55	75C7200RODXG/F1554-55	-
120" (10 FT)	75C12000RODXU/F1554-36	75C12000RODXZ/F1554-36	75C12000RODXG/F1554-36	-	-	-
144" (12 FT)	75C14400RODXU/F1554-36	75C14400RODXZ/F1554-36	75C14400RODXG/F1554-36	75C14400RODXU/F1554-55	-	75C14400RODXU/F1554-105

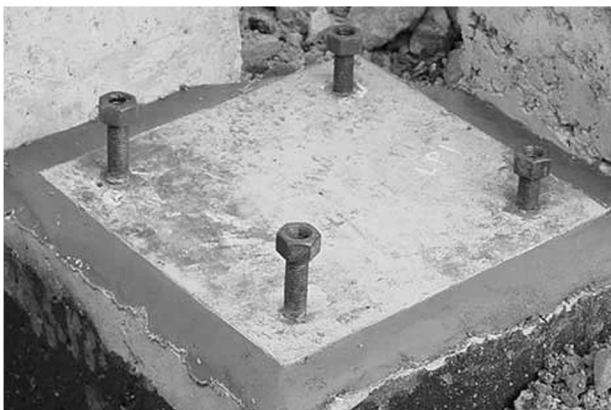
7/8-9	7/8-9 STEEL PLAIN F1554-GR36	7/8-9 STEEL ZINC F1554-GR36	7/8-9 STEEL H.D.G. F1554-GR36	7/8-9 STEEL PLAIN F1554-GR55	7/8-9 STEEL H.D.G. F1554-GR55	7/8-9 STEEL PLAIN F1554-GR105
LENGTH "						
72" (6 FT)	87C7200RODXU/F1554-36	-	87C7200RODXG/F1554-36	87C7200RODXU/F1554-55	-	-
120" (10 FT)	-	87C12000RODXZ/F1554-36	-	-	-	-
144" (12 FT)	-	-	87C14400RODXG/F1554-36	87C14400RODXU/F1554-55	-	-

1"-8	1"-8 STEEL PLAIN F1554-GR36	1"-8 STEEL ZINC F1554-GR36	1"-8 STEEL H.D.G. F1554-GR36	1"-8 STEEL PLAIN F1554-GR55	1"-8 STEEL H.D.G. F1554-GR55	1"-8 STEEL PLAIN F1554-GR105
LENGTH "						
36" (3 FT)	100C3600RODXU/F1554-36	-	100C3600RODXG/F1554-36	100C3600RODXU/F1554-55	-	100C3600RODXU/F1554-105
120" (10 FT)	100C12000RODXU/F1554-36	-	100C12000RODXG/F1554-36	-	-	100C12000RODXU/F1554-105-D
144" (12 FT)	-	100C12000RODXZ/F1554-36	100C14400RODXG/F1554-36	100C14400RODXU/F1554-55	100C14400RODXG/F1554-55	-

1-1/8-7	1-1/8-7 STEEL PLAIN F1554-GR36	1-1/8-7 STEEL ZINC F1554-GR36	1-1/8-7 STEEL H.D.G. F1554-GR36	1-1/8-7 STEEL PLAIN F1554-GR55	1-1/8-7 STEEL H.D.G. F1554-GR55	1-1/8-7 STEEL PLAIN F1554-GR105
LENGTH "						
36" (3 FT)	-	-	112C3600RODXG/F1554-36	-	-	-
144" (12 FT)	-	-	112C14400RODXG/F1554-36	-	-	-

1-1/4-7	1-1/4-7 STEEL PLAIN F1554-GR36	1-1/4-7 STEEL ZINC F1554-GR36	1-1/4-7 STEEL H.D.G. F1554-GR36	1-1/4-7 STEEL PLAIN F1554-GR55	1-1/4-7 STEEL H.D.G. F1554-GR55	1-1/4-7 STEEL PLAIN F1554-GR105
LENGTH "						
144" (12 FT)	-	125C14400RODXZ/F1554-36	-	125C14400RODXU/F1554-55	125C14400RODXG/F1554-55	125C14400RODXU/F1554-105

1-1/2-6	1-1/2-6 STEEL PLAIN F1554-GR36	1-1/2-6 STEEL ZINC F1554-GR36	1-1/2-6 STEEL H.D.G. F1554-GR36	1-1/2-6 STEEL PLAIN PLAIN F1554-GR55	1-1/2-6 STEEL H.D.G. F1554-GR55	1-1/2-6 STEEL PLAIN F1554-GR105
LENGTH "						
36" (3 FT)	150C3600RODXU/F1554-36	-	150C3600RODXG/F1554-36	150C3600RODXU/F1554-55	-	-
144" (12 FT)	-	-	150C14400RODXG/F1554-36	-	-	-



ASTM F1554 Anchor Bolts
[Grade 36, Grade 55, Grade 105]

*Daily delivery to most
areas of San Diego Cty*

THREADED ROD

ASTM A193-B7



ASTM A193-B7 High Temp/ High Pressure
125,000 psi

1/4-20	1/4-20 PLAIN ASTM A193-B7	1/4-20 ZINC ASTM A193-B7	1/4-20 H.D.G. ASTM A193-B7
LENGTH "			
36" (3 FT)	25C3600RODXU/A193-B7	-	-
144" (12 FT)	25C14400RODXU/A193-B7	-	-

1/4-28	1/4-28 PLAIN ASTM A193-B7	1/4-28 ZINC ASTM A193-B7	1/4-28 H.D.G. ASTM A193-B7
LENGTH "			
36" (3 FT)	25F3600RODXU/A193-B7	-	-

5/16-18	5/16-18 PLAIN ASTM A193-B7	5/16-18 ZINC ASTM A193-B7	5/16-18 H.D.G. ASTM A193-B7
LENGTH "			
36" (3 FT)	31C3600RODXU/A193-B7	-	-
72" (6 FT)	31C7200RODXU/A193-B7	-	-
144" (12 FT)	31C14400RODXU/A193-B7	-	-

5/16-24	5/16-24 PLAIN ASTM A193-B7	5/16-24 ZINC ASTM A193-B7	5/16-24 H.D.G. ASTM A193-B7
LENGTH "			
36" (3 FT)	31F3600RODXU/A193-B7	-	-
72" (6 FT)	31F7200RODXU/A193-B7	-	-

3/8-16	3/8-16 PLAIN ASTM A193-B7	3/8-16 ZINC ASTM A193-B7	3/8-16 H.D.G. ASTM A193-B7
LENGTH "			
36" (3 FT)	37C3600RODXU/A193-B7	-	-
72" (6 FT)	37C7200RODXU/A193-B7	-	-
144" (12 FT)	-	-	37C14400RODXG/A193-B7-D

3/8-24	3/8-24 PLAIN ASTM A193-B7	3/8-24 ZINC ASTM A193-B7	3/8-24 H.D.G. ASTM A193-B7
LENGTH "			
36" (3 FT)	37F3600RODXU/A193-B7	-	-

7/16-14	7/16-14 PLAIN ASTM A193-B7	7/16-14 ZINC ASTM A193-B7	7/16-14 H.D.G. ASTM A193-B7
LENGTH "			
36" (3 FT)	43C3600RODXU/A193-B7	-	-
72" (6 FT)	43C7200RODXU/A193-B7	-	-
144" (12 FT)	43C14400RODXU/A193-B7	-	-

7/16-20	7/16-20 PLAIN ASTM A193-B7	7/16-20 ZINC ASTM A193-B7	7/16-20 H.D.G. ASTM A193-B7
LENGTH "			
36" (3 FT)	43F3600RODXU/A193-B7	-	-
72" (6 FT)	43F7200RODXU/A193-B7	-	-
120" (10 FT)	43F12000RODXU/A193-B7	-	-
144" (12 FT)	43F14400RODXU/A193-B7	-	-

1/2-13	1/2-13 PLAIN ASTM A193-B7	1/2-13 ZINC ASTM A193-B7	1/2-13 H.D.G. ASTM A193-B7
LENGTH "			
36" (3 FT)	50C3600RODXU/A193-B7	50C3600RODXZ/A193-B7	-
72" (6 FT)	50C7200RODXU/A193-B7	-	-
120" (10 FT)	50C12000RODXU/A193-B7	-	-
144" (12 FT)	50C14400RODXU/A193-B7	-	-

1/2-20	1/2-20 PLAIN ASTM A193-B7	1/2-20 ZINC ASTM A193-B7	1/2-20 H.D.G. ASTM A193-B7
LENGTH "			
36" (3 FT)	50F3600RODXU/A193-B7	-	-
72" (6 FT)	50F7200RODXU/A193-B7	-	-
144" (12 FT)	50F14400RODXU/A193-B7	-	-

9/16-12	9/16-12 PLAIN ASTM A193-B7	9/16-12 ZINC ASTM A193-B7	9/16-12 H.D.G. ASTM A193-B7
LENGTH "			
36" (3 FT)	56C3600RODXU/A193-B7	-	-

9/16-18	9/16-18 PLAIN ASTM A193-B7	9/16-18 ZINC ASTM A193-B7	9/16-18 H.D.G. ASTM A193-B7
LENGTH "			
36" (3 FT)	56F3600RODXU/A193-B7	-	-

5/8-11	5/8-11 PLAIN ASTM A193-B7	5/8-11 ZINC ASTM A193-B7	5/8-11 H.D.G. ASTM A193-B7
LENGTH "			
36" (3 FT)	62C3600RODXU/A193-B7	-	-
72" (6 FT)	62C7200RODXU/A193-B7	-	-
120" (10 FT)	62C12000RODXU/A193-B7	-	-
144" (12 FT)	62C14400RODXU/A193-B7	-	-

5/8-18	5/8-18 PLAIN ASTM A193-B7	5/8-18 ZINC ASTM A193-B7	5/8-18 H.D.G. ASTM A193-B7
LENGTH "			
36" (3 FT)	62F3600RODXU/A193-B7	-	-
72" (6 FT)	62F7200RODXU/A193-B7	-	-
144" (12 FT)	62F14400RODXU/A193-B7	-	-

THREADED ROD

ASTM A193-B7



ASTM A193-B7 High Temp/ High Pressure
125,000 psi

3/4-10	3/4-10 PLAIN ASTM A193-B7	3/4-10 ZINC ASTM A193-B7	3/4-10 H.D.G. ASTM A193-B7
LENGTH "			
36" (3 FT)	75C3600RODXU/A193-B7	-	-
72" (6 FT)	75C7200RODXU/A193-B7	-	-
120" (10 FT)	75C12000RODXU/A193-B7	-	-
144" (12 FT)	75C14400RODXU/A193-B7	-	-

3/4-16	3/4-16 PLAIN ASTM A193-B7	3/4-16 ZINC ASTM A193-B7	3/4-16 H.D.G. ASTM A193-B7
LENGTH "			
36" (3 FT)	75F3600RODXU/A193-B7	-	-
144" (12 FT)	75F14400RODXU/A193-B7	-	-

7/8-9	7/8-9 PLAIN ASTM A193-B7	7/8-9 ZINC ASTM A193-B7	7/8-9 H.D.G. ASTM A193-B7
LENGTH "			
36" (3 FT)	87C3600RODXU/A193-B7	-	-
72" (6 FT)	87C7200RODXU/A193-B7	-	-
144" (12 FT)	87C14400RODXU/A193-B7	-	-

7/8-14	7/8-14 PLAIN ASTM A193-B7	7/8-14 ZINC ASTM A193-B7	7/8-14 H.D.G. ASTM A193-B7
LENGTH "			
36" (3 FT)	87F3600RODXU/A193-B7	-	-

1" - 8	1"-8 PLAIN ASTM A193-B7	1"-8 ZINC ASTM A193-B7	1"-8 H.D.G. ASTM A193-B7
LENGTH "			
36" (3 FT)	100C3600RODXU/A193-B7	-	-
72" (6 FT)	100C7200RODXU/A193-B7	-	-
120" (10 FT)	100C12000RODXU/A193-B7	-	-
144" (12 FT)	100C14400RODXU/A193-B7	-	100C14400RODXG/A193-B7

1" - 14	1"-14 PLAIN ASTM A193-B7	1"-14 ZINC ASTM A193-B7	1"-14 H.D.G. ASTM A193-B7
LENGTH "			
36" (3 FT)	100F3600RODXU/A193-B7	-	-
144" (12 FT)	100F14400RODXU/A193-B7	-	-

1-1/8 - 7	1-1/8-7 PLAIN ASTM A193-B7	1-1/8-7 ZINC ASTM A193-B7	1-1/8-7 H.D.G. ASTM A193-B7
LENGTH "			
36" (3 FT)	112C3600RODXU/A193-B7	-	-
144" (12 FT)	112C14400RODXU/A193-B7	-	-

1-1/8 - 12	1-1/8-12 PLAIN ASTM A193-B7	1-1/8-12 ZINC ASTM A193-B7	1-1/8-12 H.D.G. ASTM A193-B7
LENGTH "			
144" (12 FT)	112F14400RODXU/A193-B7	-	-

1-1/4 - 7	1-1/4-7 PLAIN ASTM A193-B7	1-1/4-7 ZINC ASTM A193-B7	1-1/4-7 H.D.G. ASTM A193-B7
LENGTH "			
36" (3 FT)	125C3600RODXU/A193-B7	-	-
72" (6 FT)	125C7200RODXU/A193-B7	-	-
144" (12 FT)	125C14400RODXU/A193-B7	-	-

1-1/4 - 12	1-1/4-12 PLAIN ASTM A193-B7	1-1/4-12 ZINC ASTM A193-B7	1-1/4-12 H.D.G. ASTM A193-B7
LENGTH "			
72" (6 FT)	125F7200RODXU/A193-B7	-	-
144" (12 FT)	125F14400RODXU/A193-B7	-	-

1-1/2 - 6	1-1/2-6 PLAIN ASTM A193-B7	1-1/2-6 ZINC ASTM A193-B7	1-1/2-6 H.D.G. ASTM A193-B7
LENGTH "			
36" (3 FT)	150C3600RODXU/A193-B7	-	-
72" (6 FT)	150C7200RODXU/A193-B7	-	-
144" (12 FT)	150C14400RODXU/A193-B7	-	-

1-1/2 - 12	1-1/2-12 PLAIN ASTM A193-B7	1-1/2-12 ZINC ASTM A193-B7	1-1/2-12 H.D.G. ASTM A193-B7
LENGTH "			
36" (3 FT)	150F3600RODXU/A193-B7	-	-
72" (6 FT)	150F7200RODXU/A193-B7	-	-
144" (12 FT)	150F14400RODXU/A193-B7	-	-

THREADED ROD

STAINLESS



ASTM F593-2017 **STAINLESS 18-8, 316, 304**
70,000 psi

2-56	LENGTH "	2-56 (18-8) STAINLESS	2-56 (316) STAINLESS
	36" (3 FT)	2C3600RODS	-
4-40	LENGTH "	4-40 (18-8) STAINLESS	4-40 (316) STAINLESS
	36" (3 FT)	4C3600RODS	-
5-40	LENGTH "	5-40 (18-8) STAINLESS	5-40 (316) STAINLESS
	36" (3 FT)	5C3600RODS	-
6-32	LENGTH "	6-32 (18-8) STAINLESS	6-32 (316) STAINLESS
	36" (3 FT)	6C3600RODS	-
8-32	LENGTH "	8-32 (18-8) STAINLESS	8-32 (316) STAINLESS
	36" (3 FT)	8C3600RODS	-
10-24	LENGTH "	10-24 (18-8) STAINLESS	10-24 (316) STAINLESS
	36" (3 FT)	10C3600RODS	-
10-32	LENGTH "	10-32 (18-8) STAINLESS	10-32 (316) STAINLESS
	36" (3 FT)	10F3600RODS	-
	72" (6 FT)	10F7200RODS	-
1/4-20	LENGTH "	1/4-20 (18-8) STAINLESS	1/4-20 (316) STAINLESS
	36" (3 FT)	25C3600RODS	25C3600ROD6
	72" (6 FT)	25C7200RODS	25C7200ROD6
144" (12 FT)	25C14400RODS	25C14400ROD6	
1/4-28	LENGTH "	1/4-28 (18-8) STAINLESS	1/4-28 (316) STAINLESS
	36" (3 FT)	25F3600RODS	-
5/16-18	LENGTH "	5/16-18 (18-8) STAINLESS	5/16-18 (316) STAINLESS
	36" (3 FT)	31C3600RODS	31C3600ROD6
	72" (6 FT)	31C7200RODS	31C7200ROD6
	144" (12 FT)	31C14400RODS	31C14400ROD6
5/16-24	LENGTH "	5/16-24 (18-8) STAINLESS	5/16-24 (316) STAINLESS
	36" (3 FT)	31F3600RODS	-

THREADED ROD

STAINLESS



ASTM F593-2017 **STAINLESS 18-8, 316, 304**
70,000 psi

3/8-16	LENGTH "	3/8-16 (18-8) STAINLESS	3/8-16 (316) STAINLESS
	36" (3 FT)	37C3600RODS	37C3600ROD6
	72" (6 FT)	37C7200RODS	37C7200ROD6
144" (12 FT)	37C14400RODS	37C14400ROD6	
3/8-24	LENGTH "	3/8-24 (18-8) STAINLESS	3/8-24 (316) STAINLESS
	36" (3 FT)	37F3600RODS	37F3600ROD6
7/16-14	LENGTH "	7/16-14 (18-8) STAINLESS	7/16-14 (316) STAINLESS
	36" (3 FT)	43C3600RODS	-
	72" (6 FT)	43C7200RODS	-
144" (12 FT)	43C14400RODS	-	
7/16-20	LENGTH "	7/16-20 (18-8) STAINLESS	7/16-20 (316) STAINLESS
	36" (3 FT)	43F3600RODS	-
	72" (6 FT)	43F7200RODS	-
144" (12 FT)	43F14400RODS	-	
1/2-13	LENGTH "	1/2-13 (18-8) STAINLESS	1/2-13 (316) STAINLESS
	4"	-	50C400ROD6S
	5"	50C500RODS	-
	5 1/2"	50C550RODS	-
	36" (3 FT)	50C3600RODS	50C3600ROD6
	72" (6 FT)	50C7200RODS	50C7200ROD6
144" (12 FT)	50C14400RODS	50C14400ROD6	
1/2-20	LENGTH "	1/2-20 (18-8) STAINLESS	1/2-20 (316) STAINLESS
	36" (3 FT)	50F3600RODS	-
	72" (6 FT)	50F7200RODS	-
9/16-12	LENGTH "	9/16-12 (18-8) STAINLESS	9/16-12 (316) STAINLESS
	36" (3 FT)	56C3600RODS	-
9/16-18	LENGTH "	9/16-18 (18-8) STAINLESS	9/16-18 (316) STAINLESS
	36" (3 FT)	56F3600RODS	-
5/8-11	LENGTH "	5/8-11 (18-8) STAINLESS	5/8-11 (316) STAINLESS
	36" (3 FT)	62C3600RODS	62C3600ROD6
	72" (6 FT)	62C7200RODS	62C7200ROD6
	144" (12 FT)	62C14400RODS	62C14400ROD6
5/8-18	LENGTH "	5/8-18 (18-8) STAINLESS	5/8-18 (316) STAINLESS
	36" (3 FT)	62F3600RODS	-

THREADED ROD

STAINLESS



ASTM F593-2017 **STAINLESS 18-8, 316, 304**
70,000 psi

3/4-10	LENGTH "	3/4-10 (18-8) STAINLESS	3/4-10 (316) STAINLESS
	36" (3 FT)	75C3600RODS	75C3600ROD6
	72" (6 FT)	75C7200RODS	75C7200ROD6
	144" (12 FT)	75C14400RODS	75C14400ROD6

3/4-16	LENGTH "	3/4-16 (18-8) STAINLESS	3/4-16 (316) STAINLESS
	36" (3 FT)	75F3600RODS	-

7/8-9	LENGTH "	7/8-9 (18-8) STAINLESS	7/8-9 (316) STAINLESS
	36" (3 FT)	87C3600RODS	87C3600ROD6
	72" (6 FT)	87C7200RODS	87C7200ROD6
	144" (12 FT)	87C14400RODS	87C14400ROD6

7/8-14	LENGTH "	7/8-14 (18-8) STAINLESS	7/8-14 (316) STAINLESS
	36" (3 FT)	87F3600RODS	-

1"-8	LENGTH "	1"-8 (18-8) STAINLESS	1"-8 (316) STAINLESS
	36" (3 FT)	100C3600RODS	100C3600ROD6
	72" (6 FT)	100C7200RODS	100C7200ROD6
	144" (12 FT)	100C14400RODS	100C14400ROD6

1"-14	LENGTH "	1"-14 (18-8) STAINLESS	1"-14 (316) STAINLESS
	36" (3 FT)	100F3600RODS	-
	72" (6 FT)	100F7200RODS	-

1-1/8-7	LENGTH "	1-1/8-7 (18-8) STAINLESS	1-1/8-7 (316) STAINLESS
	36" (3 FT)	112C3600RODS	-
	144" (12 FT)	112C14400RODS	112C14400ROD6

1-1/4-7	LENGTH "	1-1/4-7 (18-8) STAINLESS	1-1/4-7 (316) STAINLESS
	36" (3 FT)	125C3600RODS	-
	72" (6 FT)	125C7200RODS	-
	144" (12 FT)	125C14400RODS	-

THREADED ROD



ACME THREAD

CALL FOR AVAILABILITY



LEFT - HAND

CALL FOR AVAILABILITY



HASTELLOY, INCONEL, MONEL

ALLOY, DUPLEX, TITANIUM

EXOTICS

CALL FOR AVAILABILITY



ASTM A193-B6

ASTM A193-B8

ASTM A193-B8M

CALL FOR AVAILABILITY



METRIC SIZES

METRIC ROD IN STOCK

CALL FOR AVAILABILITY